



Forest Drive, Theydon Bois, CM16

BUTLER & STAG



## SOLD OFF MARKET!

**A superbly appointed and impressive three bedroom family residence, situated in the highly sought after village of Theydon Bois.**



## Freehold

- Semi Detached House
- Well Presented
- Utility & Study Room
- Three Bedrooms
- Kitchen/Dining Area
- Off Street Parking

The property offers 1330 sq.ft (124 sqm) of living space arranged over two floors and has been fully refurbished throughout. The character of this property is such that it will immediately provide the most comfortable home and benefits from a fitted kitchen, utility room, lounge, dining area, ground floor W/C, three double bedrooms, family bathroom and a magnificent large secluded rear garden. The driveway to the front of the property is block paved, providing off street parking for four/five vehicles.

Forest Drive is short walking distance to Central Line station for easy access in to the City, Canary Wharf and West End. Theydon Bois Village itself hosts local shops two local pubs, Epping Forest, children's park and the Village Green. There are several well regarded state and private schools also within easy reach.

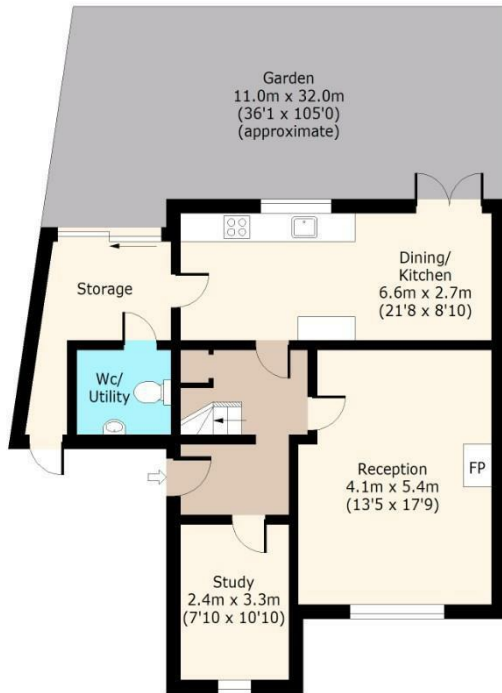




Forest Drive

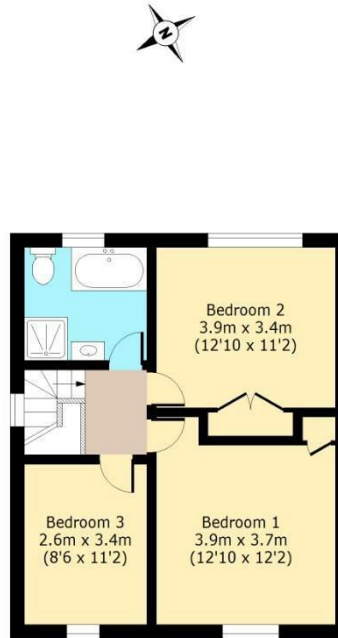
Ground Floor

Approx. 71 Sq. meters (762 Sq. feet)



First Floor

Approx. 53 Sq. meters (568 Sq. feet)



Total area: approx. 124 Sq. meters (1330 Sq. feet)  
For illustration purposes only - not to scale  
www.jpaplius.com



**BUTLER & STAG**

☎ 01992 667666

🏠 4 Forest Drive, Theydon Bois, Essex, CM16 7EY

✉ theydon@butlerandstag.com

[www.butlerandstag.uk](http://www.butlerandstag.uk)

IMPORTANT NOTICE - These particulars have been prepared in good faith and they are not intended to constitute part of an offer or contract. We have not performed a structural survey on this property and the services, appliances and specific fittings have not been tested. All photographs, measurements, floor plans and distances referred to are given as a guide and should not be relied upon.